

UNM Early Childhood Services Center

Mission - The Early Childhood Services Center provides integrated services, support and resources to Early Childhood professionals, programs, communities, families and children.

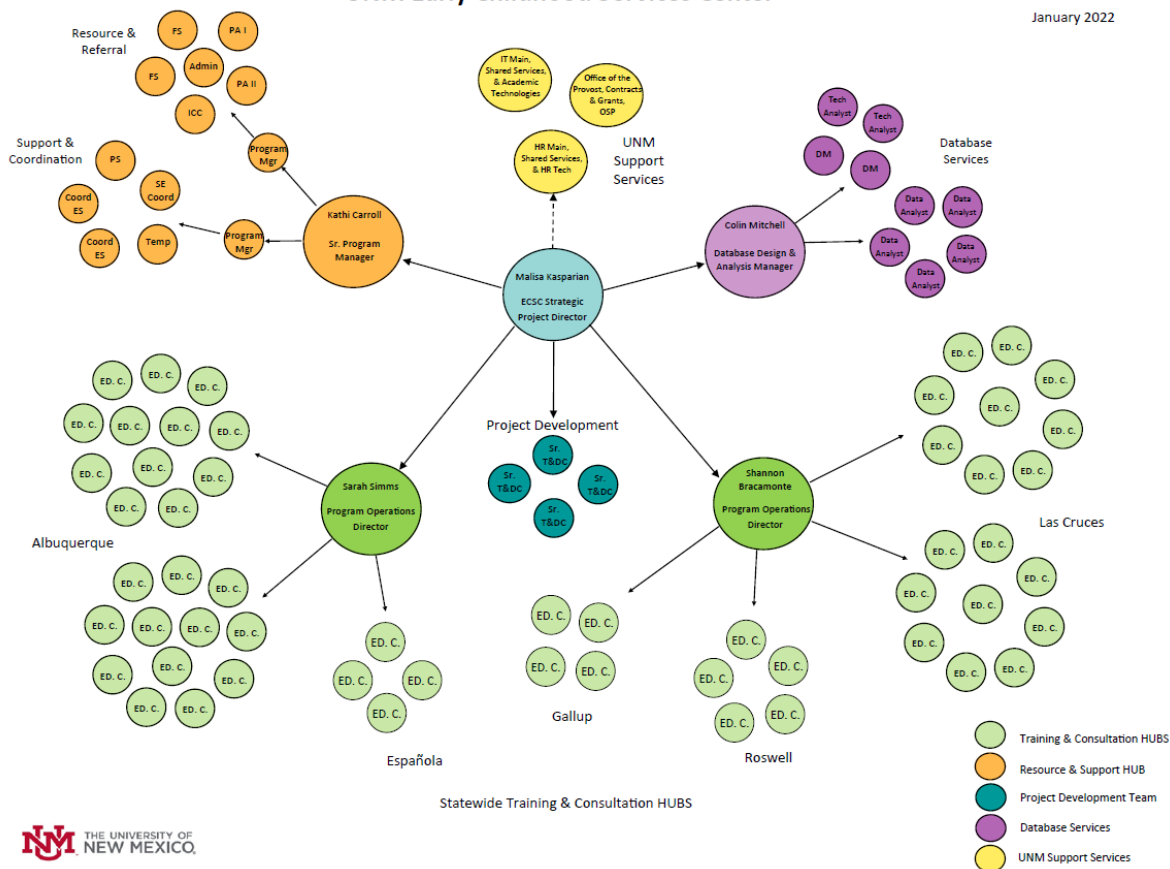
Vision - Inspiring excellence in early childhood practices to all children, families, and their communities to realize their full potential



UNM Early Childhood Services Center

UNM Early Childhood Services Center

January 2022



The Early Childhood Services Center organizational structure supports cross collaboration and coordination of all services statewide.

There are 5 ECSC locations across the state of New Mexico in Albuquerque, Espanola, Gallup, Roswell and Las Cruces that work:

- collaboratively at the local, regional and state levels
- to support a comprehensive and aligned quality early care, education and family support system
- to be equitably available to all early care providers, children and their families in New Mexico



Regional Training and Consultation Hubs



A combination of services are available to early learning and care programs such as **training, technical assistance, coaching, consultation, mentoring, access to early childhood resources, and communities of practice.**

We provide support to:

- Licensed & Registered Child Care Programs
- 1-STAR Child Care Programs
- 2-STAR Child Care Programs
- FOCUS 2+ to 5 STAR Programs
- ECECD NM PreK Programs



Regional Training and Consultation Hubs

A team of more than 55 consultants provides coaching and consultation to programs across New Mexico to focus on the achievement of state quality improvement standards, NM PreK Standards and licensing standards.

Consultation is focused on...

- Educator Professional Growth
- Child Outcomes
- Social Emotional Supportive Environments
- Reflective Practice
- Continuous Quality Improvement



Project Development Team



The Project Development Team oversees and manages projects related to training and organization. Leads and mentors other trainers and consultants towards desired outcomes. Participates in program and change efforts to support Early Childhood Services Center, designing of online and face-to-face learning events, support and training for facilitators, instructional development projects, and group consultations; assists with the development of strategies aimed at improving educational, individual and organizational performance.



Toy Lending and Resource Libraries

Families, early care educators and other community partners can borrow toys, educational materials, professional resources, videos and children's books for FREE! Lending libraries are located in communities all throughout New Mexico:



Albuquerque
Española
Gallup

Roswell
Hobbs
Las Cruces



Toy Lending and Resource Libraries

In addition to the Libraries, we collaborate with regional agencies and organizations, such as DA and CPS offices, to set up “Paloma’s Play Corners” as family-friendly, welcoming, safe places for children as their parents or caregivers are occupied with filling out applications or testifying as witnesses.

Albuquerque
Española
Farmington
Las Cruces

Roswell
Hobbs
Gallup
Grants



Database Services



Provides database development, implementation, support and training to end-users across the following database systems:

- Home Visiting
- Infant Mental Health
- New Mexico Tiered Quality Rating and Improvement System (NMTQRIS)

For more information call 505-277-0469 or visit ecscdata@unm.edu



Safe Sleep Baby Kits Initiative



To find a local Home Visiting program, found on our [Early Childhood Education and Family Supports Portal](#) by entering an address, or call 1-800-691-9067.

ECECD Home Visiting provides any NM family who requests it a Safe Sleep Baby Kit containing materials to foster a Safe Sleep environment in a variety of spaces. Our purpose is to provide all families in New Mexico access to and awareness of a Safe Sleep environment in a way that is respectful, culturally responsive, equitable, and informed. The Safe Sleep Baby Kit is distributed upon a family's request by Home Visiting programs and partner agencies and organizations throughout our state.

The kit includes a Travel Bassinet, infant clothing, baby board books, and educational materials about Safe Sleep, baby's development, and resources available to families of young children in our state. The Safe Sleep Baby Kit is available to families regardless of income, home language, citizenship status, or family structure.



Resource and Support Hub – Coordination and Support Team

- New Mexico Trainer Registry
- Coordination of Early Childhood learning events and meetings
- NMELS - New Mexico Early Learning System
- Early Childhood Professional Development

For more information on available trainings or to register for trainings, please visit www.nmels.org. For questions, please call 505-277-1118 or email nmels@unm.edu

For the Trainer Registry, call 505-250-6725



Resource and Support Hub - NewMexicoKids Resource & Referral

- Over 2000 child care and early education, home visiting, early intervention, and other community resources in our referral databases
- Database updated regularly via state data lists
- Assist families with child care assistance information as well as other financial and community supports



For more information visit search.newmexicokids.org, email resourceandreferral@unm.edu or call 1-800-691-9067 toll free



Resource and Support Hub - Websites

Free Trainings for Early Childhood Educators and Partners

www.nmels.org

Information for Early Childhood Programs and Families

www.newmexicokids.org

Information and Locations of NM PreK Programs in NM

www.newmexicoprek.org

