

# Tip Sheet: *Partnerships*

**Part C – Eligibility:** In Early Intervention, the term “developmentally delayed” refers to children 0-3, with a documented delay in development 25% below the child’s chronological age. Eligibility may also be granted when a child presents with an established condition or biological/ medical risk for developmental delay.

**Part B – Eligibility:** In Child Find, the term “developmentally delayed” refers to a child aged 3-9, with documented delays in development which are 30% below the child’s chronological age. There are up to 14 categories in Child Find that may be looked at more closely to determine eligibility beyond developmental delay.

## Things to consider:

Talk with families about your concerns.

Use assessment information like ASQ 3/ SE for referral and monitoring, or NMELGs to support your concerns and understanding of the child’s development.

Work with partners like family and coworkers, to help achieve full access, participation and support. Identify who your support partners might be. If a referral for developmental or behavioral services is needed, it would be preferable for the family to initiate contact with the support partner. Child care providers could also do this with written informed parental consent.

Once contact is established, then it is the child care provider’s responsibility to share the information they have regarding the child (once parent permission is given) with the support partner.

As with all partnerships, the child care provider needs to work collaboratively with the support partner and parents to develop and implement a plan of action.

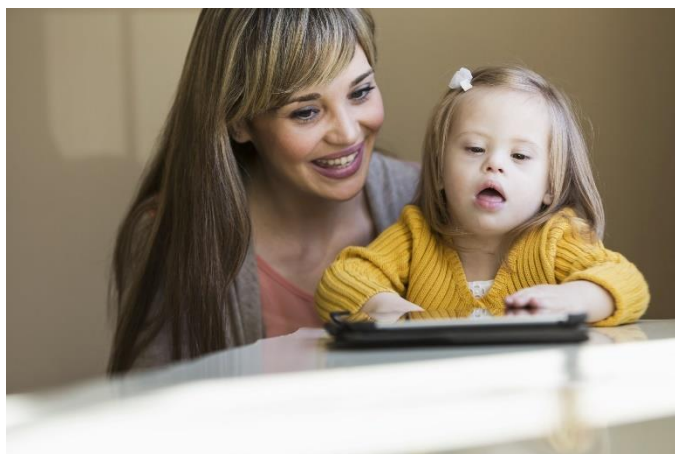
Connect with your local FIT or PED/ Child Find referral information & scheduling procedures if needed.



## Identifying Support:

1. Name the situation – briefly tell the story of what is going on in your classroom.
2. Who are the individuals directly involved with this situation? (Family, child, other care professionals, educators, directors, other families, etc.)
3. What are the variables influencing this situation? (How many things can you name that may or may not be important to factor in?)

# Tip Sheet: *Partnerships*



## Glossary

**Assessment:** Ongoing procedures used to look at the child's unique strengths and needs, developmental functioning, and the progress made by the child over time.

**Collaboration:** The action of working with someone to produce or create something.

**Developmental Delay:**

Part C – 25% delayed below the chronological age.

Part B – 30 % delayed below the chronological age.

**Evaluation:** The process through which a child's eligibility for services is determined.

**Eligibility:** It is the criteria for services.

**Observation:** The action or process of observing something or someone carefully in order to gain information.

**Partner:** A player on the same side or team as another.

**Part B:** Individuals with Disability Act Public Education requirements for Child Find.

**Part C:** Individuals with Disability Act Public Education requirements for Early Intervention.

**Referral:** The process of informing community Part B or Part C programs regarding a child who may benefit from support services and further developmental evaluation.

**Variables:** An element, feature, or factor that is liable to vary or change.

